

**2016 FIA Formula E Circuit Medical Service:  
Recruitment, Training and Deployment of  
Professional Volunteers**

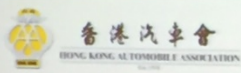
**Dr. Kin-kwan LAM  
Chief Medical Officer  
AMS Medical Team Coordinator**

# 2016 FIA Formula E Hong Kong ePrix

- \* Formula Electric Racing (HK) limited
- \* HK Automobile Association (HKAA)
- \* Supported by various government departments
- \* Auxiliary Medical Service (AMS) provided on-track medical services



周年同人大會暨顧問組委員就職典禮



2016 FIA Formula E HKT  
Hong Kong ePrix  
2016國際汽聯香港電訊  
電動方程式賽車錦標賽香港站



日期：2016年10月8-9日  
地點：中環海濱

時間：  
10月8日 中午12時至晚上7時  
10月9日 早上7時至晚上6時





# Chief Medical Officer

- \* Overall control, organization and administration of the circuit medical service
- \* Coordination with designated hospitals
- \* Arrangement of medical personnel for Medical Centre and tracks
- \* Ensuring medical intervention equipment meeting FIA's requirement



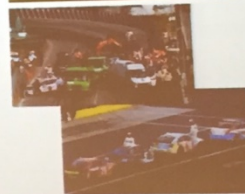
# Training of Professional Volunteers

- \* Marshal-type training
- \* Removal HANS
- \* Ambulance Aid training
- \* Motorsport Medicine Incident Management
- \* Joint Exercise on Formula E
- \* On-site ad hoc drills
- \* Extricating a driver from an open chassis car



## 旗號 - 紅旗

- 在Clerk Of the Course(COC)指示下, 全場出示紅旗, 起步點紅燈全亮, 賽事暫停;
- 所有賽車必須在顧及安全情況下立刻降低車速, 禁止超車;
- 所有賽車須返回起步區, 依照工作人員指示停車等候。



周年大會暨顧問組委員就職典禮



# Recruitment of Volunteers

- \* Recruiting experienced paramedics
- \* Participation in specialised training courses
- \* Matching doctors' deployment based on their specializations and FIA's requirement
- \* Arrangement of supporting nurses and paramedics to each duty post

# Deployment

- \* Briefing sessions before the event
- \* Familiarization site visit to the venue
- \* Issuing of operational orders and instructions
- \* Checking of medical equipment and drugs
- \* Preparation of ambulances
- \* Appropriate uniform and dress code



# Spectrum of Illness

- \* Dizziness, headache
- \* cuts, fracture, contusion
- \* heat exhaustion and sunburn
- \* Most were treated and discharged on site
- \* A few attended A&E for further assessment



# Challenges Faced

- \* Threat of injury by the flying fragment of broken racing cars
- \* Heat-related injury in outdoor posts
- \* Difficulty in logistic support



# Lesson Learned

- \* Expert input from AMS Medical Professional Committee on Major Events (MPCOME)
- \* Recruitment criteria can help in selecting appropriate persons on duty
- \* Training is important for professional doctors and nurse for such kind of outdoor duty
- \* Wearing of personal protective gears is essential
- \* With the capacity as the AMS Medical Team Coordinator, CMO can effectively execute his roles and responsibilities

# Auxiliary Medical Service



**Thank You**

